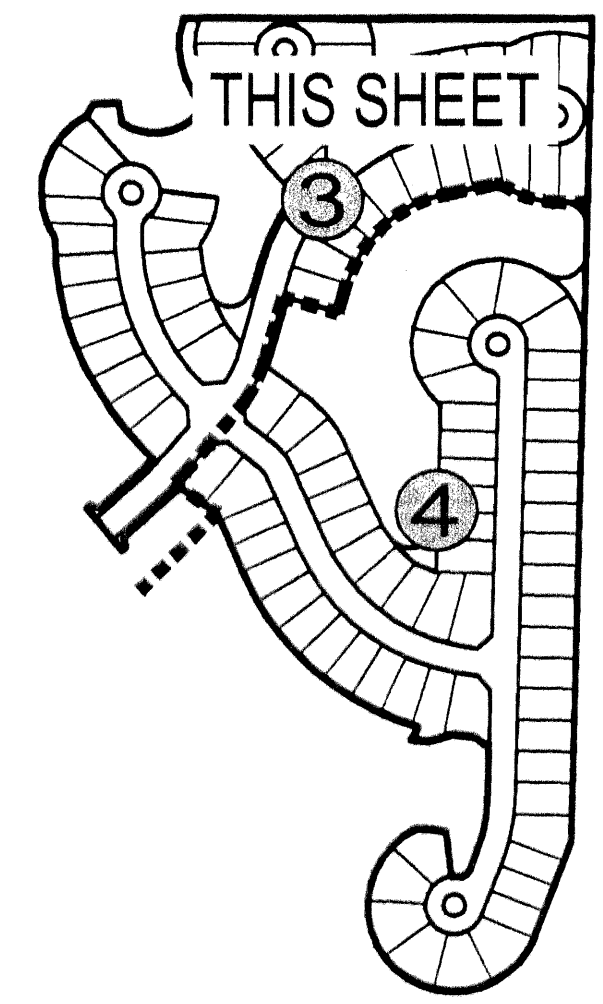


# EVERGRENE P.C.D. PLAT FIVE

A REPLAT OF TRACT F-7 AND WATER MANAGEMENT TRACTS WM-6 AND WM-7, EVERGRENE PLAT TWO AS RECORDED IN PLAT BOOK 95, PAGES 29 THROUGH 54 INCLUSIVE, PUBLIC RECORDS OF PALM BEACH COUNTY, FLORIDA LYING IN THE NORTHEAST QUARTER OF SECTION 25, TOWNSHIP 41 SOUTH, RANGE 42 EAST, CITY OF PALM BEACH GARDENS, PALM BEACH COUNTY, FLORIDA  
SHEET No.3 OF 4 FEBRUARY 2003

DONALD ROSS ROAD



ALTERNATE A-1-A

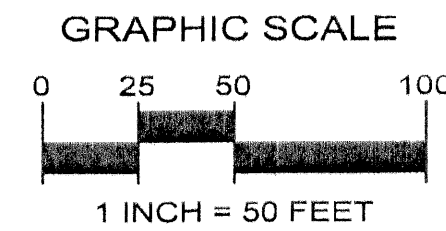
INDEX SHEET MAP NOT TO SCALE

**SYMBOLS LEGEND**

- SET PERMANENT REFERENCE MONUMENT (P.R.M.) "L.B. 4897"
- PERMANENT CONTROL POINT (P.C.P.)
- NORTHERN PALM BEACH COUNTY IMPROVEMENT DISTRICT
- R RADIUS
- ∠ CENTRAL ANGLE
- CHORD BEARING AND DISTANCE
- ∩ INTERSECTION
- D.E. DRAINAGE EASEMENT
- P.O.B. POINT OF BEGINNING
- P.O.C. POINT OF COMMENCING
- CHANGE IN DIRECTION
- P.S.M. PROFESSIONAL SURVEYOR AND MAPPER
- P.C. POINT OF CURVATURE
- NR NON-RADIAL LOT LINE
- PERMANENT REFERENCE MONUMENT (P.R.M.) "L.B. 2936"
- CHANGE OF DIRECTION PER EVERGRENE P.C.D. PLAT TWO
- ① 28' WATER MANAGEMENT MAINTENANCE EASEMENT
- ② 10' UTILITY EASEMENT (EVERGRENE PLAT TWO)
- ③ 10' UTILITY EASEMENT
- ④ NORTH LINE OF WATER MANAGEMENT TRACT WM-7 (EVERGRENE PLAT TWO)
- ⑤ LIMITS OF TRACT F-7 (EVERGRENE PLAT TWO)

**NOTES:**

- \*NOTE: ALL LOT LINES ARE RADIAL UNLESS OTHERWISE SPECIFIED.
- \*NOTE: CERTAIN BEARINGS AND CENTRAL ANGLES ARE SHOWN IN FRACTIONAL SECONDS TO AVOID ROUNDING-OFF DISCREPANCIES.

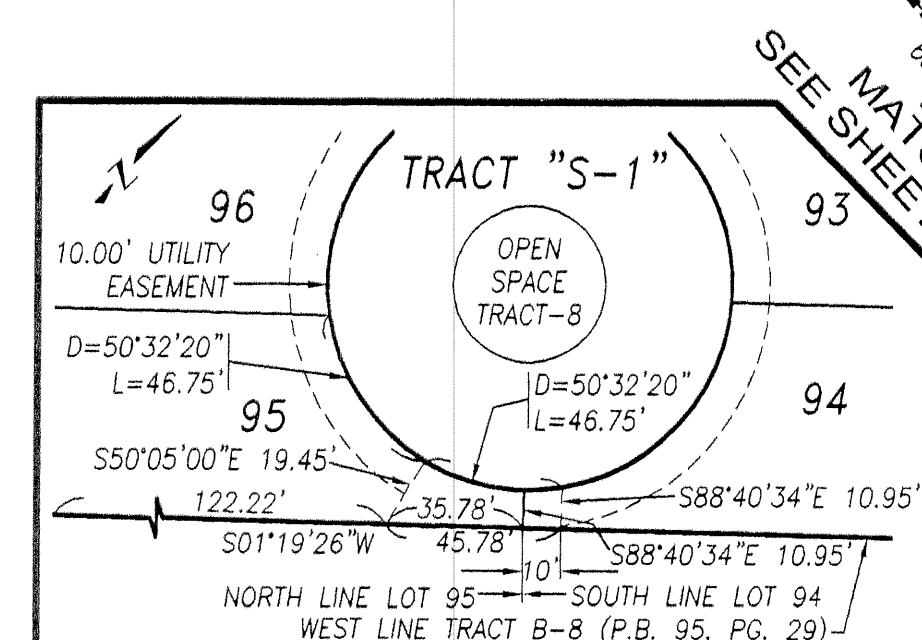
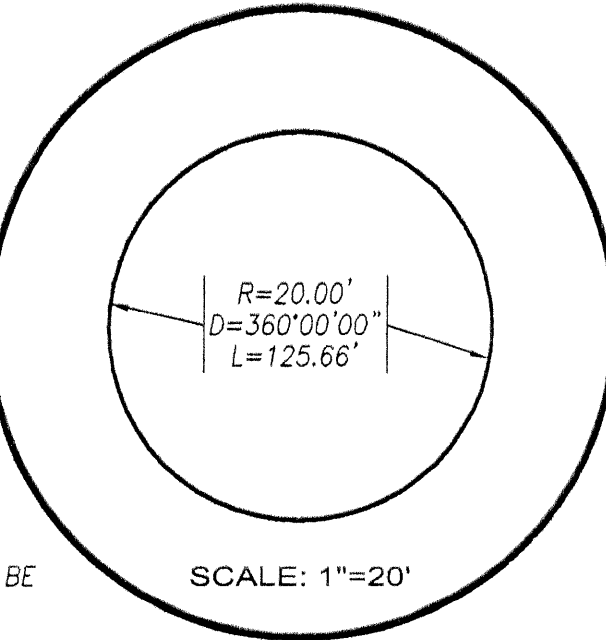
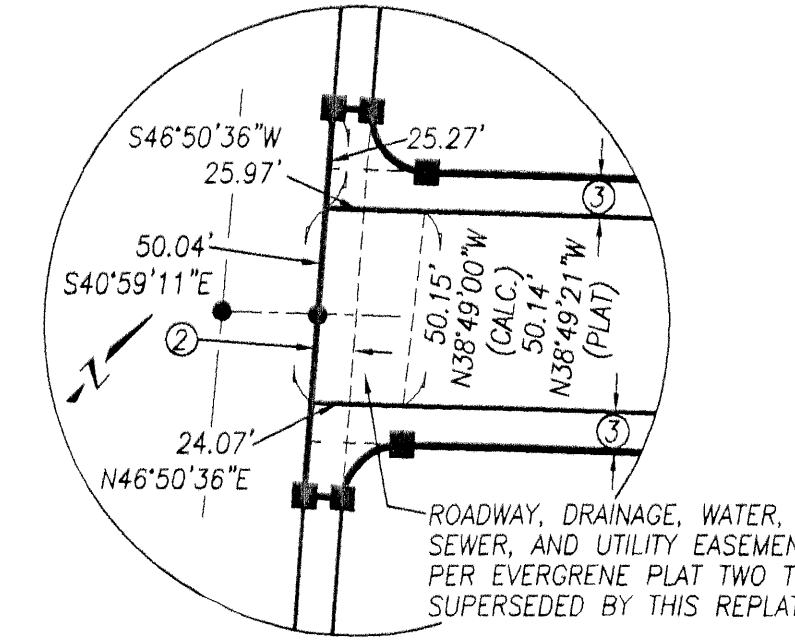
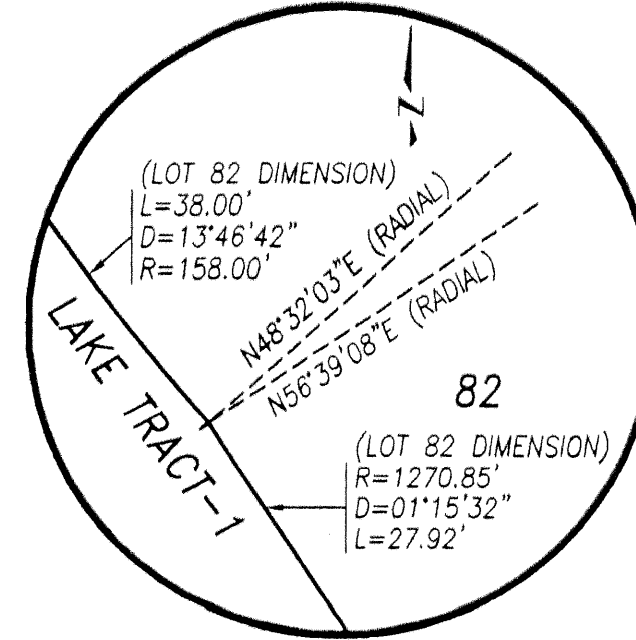
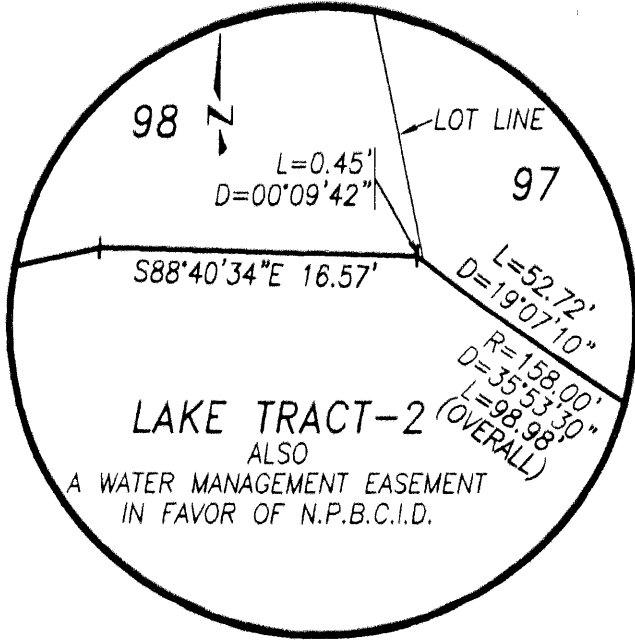
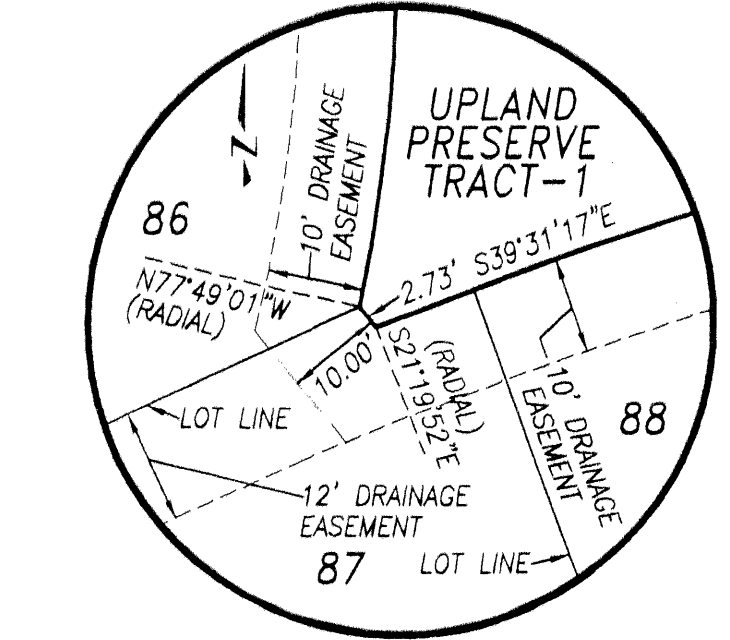
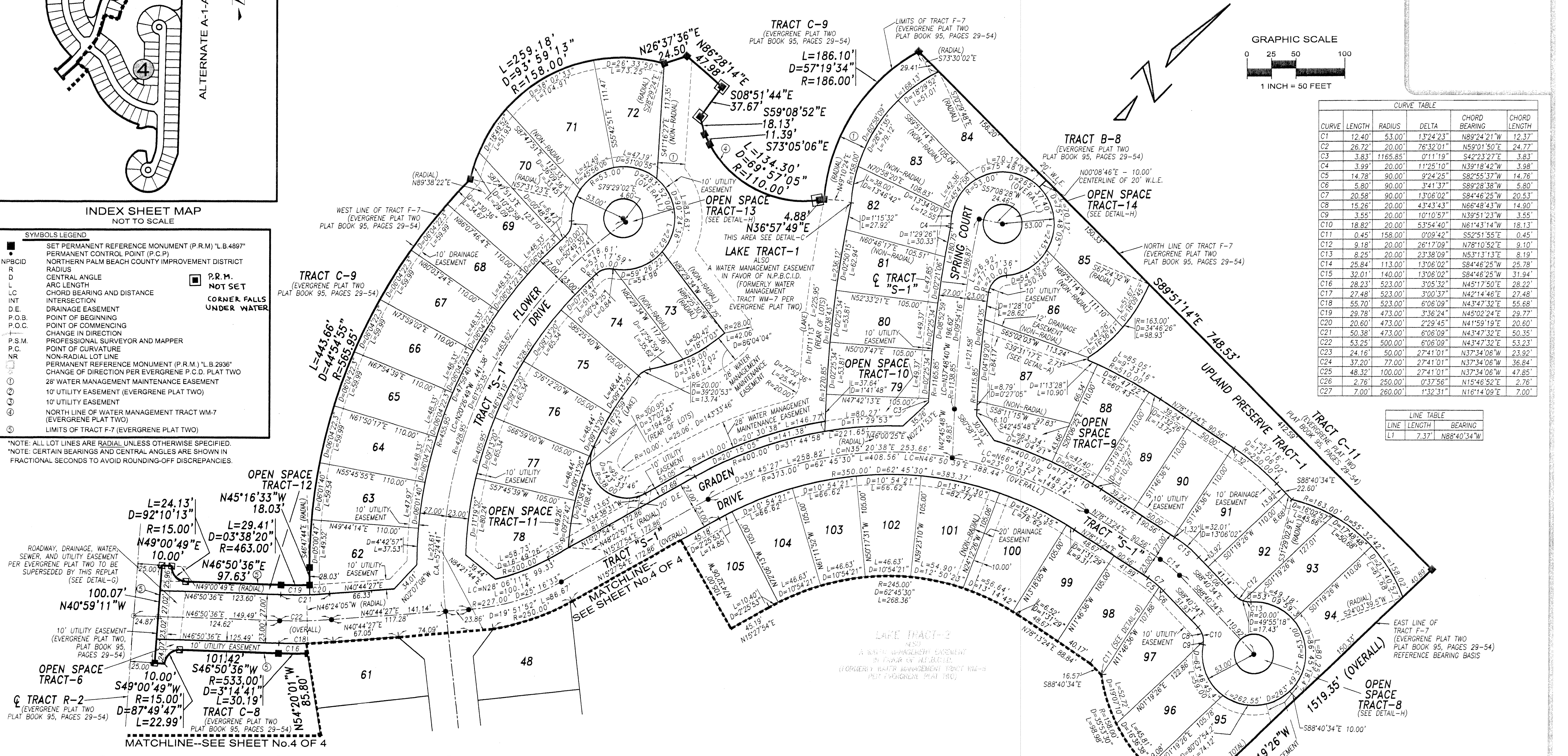


**CURVE TABLE**

CURVE	LENGTH	RADIUS	DELTA	CHORD BEARING	CHORD LENGTH
C1	12.40'	53.00'	13°24'23"	N89°24'21"W	12.37'
C2	26.72'	20.00'	76°32'01"	N59°01'50"E	24.77'
C3	3.83'	1165.85'	0°11'19"	S42°23'27"E	3.83'
C4	3.99'	20.00'	11°25'10"	N39°18'42"W	3.98'
C5	14.78'	90.00'	9°24'25"	S82°55'37"W	14.76'
C6	5.80'	90.00'	3°41'37"	S89°28'38"W	5.80'
C7	20.58'	90.00'	13°06'02"	S84°46'25"W	20.53'
C8	15.26'	20.00'	43°43'43"	N68°48'43"W	14.90'
C9	3.55'	20.00'	10°10'57"	N39°51'23"W	3.55'
C10	18.82'	20.00'	53°54'40"	N61°43'14"W	18.13'
C11	0.45'	158.00'	0°09'42"	S52°51'55"E	0.45'
C12	9.18'	20.00'	26°17'09"	N78°10'52"E	9.10'
C13	8.25'	20.00'	23°38'09"	N53°13'13"E	8.19'
C14	25.84'	113.00'	13°06'02"	S84°46'25"W	25.78'
C15	32.01'	140.00'	13°06'02"	S84°46'25"W	31.94'
C16	28.23'	523.00'	3°05'32"	N45°17'50"E	28.22'
C17	27.48'	523.00'	3°00'37"	N42°14'46"E	27.48'
C18	55.70'	523.00'	6°06'09"	N43°47'32"E	55.68'
C19	29.78'	473.00'	3°36'24"	N45°02'24"E	29.77'
C20	20.60'	473.00'	2°29'45"	N41°59'19"E	20.60'
C21	50.38'	473.00'	6°06'09"	N43°47'32"E	50.35'
C22	53.25'	500.00'	6°06'09"	N43°47'32"E	53.23'
C23	24.16'	50.00'	27°41'01"	N37°34'06"W	23.92'
C24	37.20'	77.00'	27°41'01"	N37°34'06"W	36.84'
C25	48.32'	100.00'	27°41'01"	N37°34'06"W	47.85'
C26	2.76'	250.00'	0°37'56"	N15°46'52"E	2.76'
C27	7.00'	260.00'	1°32'31"	N16°14'09"E	7.00'

**LINE TABLE**

LINE	LENGTH	BEARING
LT	7.37'	N88°40'34"W



**Keshavarz & Associates, Inc.**  
CONSULTING ENGINEERS - SURVEYORS  
1280 N. Congress Avenue, Suite 206  
West Palm Beach, Florida 33409  
Tel: (561) 689-8600 Fax: (561) 689-7476 LB 4897  
THIS INSTRUMENT WAS PREPARED BY MANUEL A. GUTIERREZ, PSM  
PROFESSIONAL SURVEYOR AND MAPPER NO. 4102  
IN THE OFFICES OF KESHAVARZ & ASSOCIATES, INC.